

Illegal Global Trafficking in Hazardous Waste: Enforcement Issues

**Richard Gutierrez, *JD, LI.M.*
Basel Action Network/Ban Toxics!**

**REN Meeting
Cebu City
November 2012**

Ban Toxic's Mission

To prevent the globalization of the hazardous chemical crisis:

- Prevent Toxic Trade – the externalization of risk and costs to developing Countries.
- Promote a Toxics-Free Future -- through green design and minimizing consumption
- Promote Global Environmental Justice – where all have a right to a pollution-free environment.



Recent Publications



Free PDF

Chasing Mercury:

Measuring Mercury Levels in the Air Across the Philippines

[DOWNLOAD PDF](#)

Free PDF

The Price of Gold:

Mercury Use and Current Issues

Welcome to Ban Toxics!

BAN Toxics! is an independent non-profit, environmental organization that is devoted to preventing toxic trade - wastes, goods, and technology, and upholding the rights of developing countries to environmental justice, with particular focus on the Asia-Pacific region. We achieve our goals through organization, education and advocacy.

BAN Toxics! works closely with local, national, and international environmental, academic and trade institutions using both local and international campaigning, capacity-sharing, and bridge-building between activists in the Asia-Pacific, and throughout the world.

[ABOUT US](#)

BT News Headlines

Toxic Mercury in Air, Growing Concern

Toxic Mercury in Air, Growing Concern Groups Raise Alarm After 6-month Study Reveals Extent of Pollution

Connect with us at:



Resources

PDF Files:

- [BT ASGM_Information_Sheet 2010.pdf](#)
- [BT Mercury Primer.2009 2.pdf](#)
- [BT.Mercury Storage 2010.RGEdit.pdf](#)
- [BT.Mercury-Free Schools 2010.RGEdit.pdf](#)

Outline

- I. The Export of Harm: E-waste on the Rise**
- II. Legal/Enforcement Update**
 - BAN' s Container Tracking Exercise**
- III. Recommendations**

Exporting Harm: E-Waste on the Rise



**In USA 80% Delivered
to “Recyclers” are Exported**



Guiyu, China 2001



Exporting Harm: The High-Tech Trashing of Asia (2002)



Available from: www.ban.org

Lagos, Nigeria 2005



500 Containers/month for "Reuse"



**But an estimated 75% are
“junks”**





The Digital Dump:

Exporting Re-use and Abuse to Africa (2005)



Available from: www.ban.org

Guiyu, China 2008/2009





Accra, Ghana 2009

Legal/Enforcement Update



Container Tracking: BAN's Citizen Enforcement





CAUTION
96
HIGH

CBHU
823

W&A

COSCO

Mack

Mack

014

CK

44

C23132

COSCO



arance Center

PARKING IN RE



METZ 508388

2419728

Garden State
Chassis

METRO POOL

TRAC

TRAC

MSKU

138 1714

45G1

IC
70





Contact Share Advertising

Main page my track-trace Air cargo Container Post/EMS Bill of Lading Mobile Help

Container tracking

Track containers for 97 companies here

CRXU982145

Track with options

Track direct

[Track with options or direct?](#)

We now have a page like this for [Bill Of Lading tracking](#)

Some useful container tracking related links:

[BIC code search](#)
[Container prefix list](#)

[Port codes](#)
[Country codes](#)

[Check digit calculator](#)
[Vessel Tracking](#)

Safetrans Dunnage Bags

Avoid transport damage secure your cargo with Safetrans



Bulk Container Liners

Ship Your Dry Free Flowing Products in the Most Cost-Effective Package!

Ads by Google

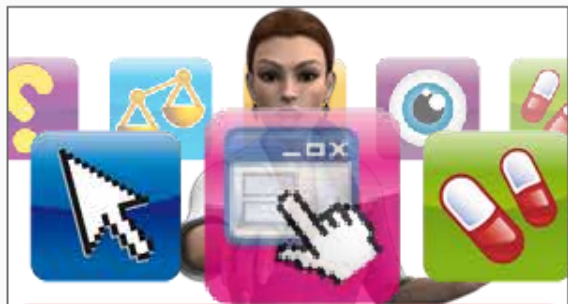
The 97 companies listed below are supported by this service. [Tell us](#) if you know of other companies offering container tracking, if possible provide a link to their tracking page and a valid tracking number for testing.

[ACL](#)
[Alianca](#)
[Allalouf](#)
[ANL](#)
[APL](#)
[Atlanticargo](#)
[Balaji Shipping](#) ⚠️
[Beacon Intermodal](#)

[Florens container services](#) ⚠️
[Focus Trucking](#)
[GESeaCo](#) 🏠
[GOLD](#)
[Gold Star Line](#)
[Grimaldi](#)
[Hamburg Süd](#)
[Hanjin Shipping](#)

[Pacific Direct Line](#)
[PIL](#)
[Pollux & Castor](#)
[RCL](#)
[Royal Arctic](#)
[Safmarine](#)
[Samskip](#)
[Sea Star Line](#)

Search web



Digital declarations



BAN Container Tracking in North America

Port	2008	2009-2010	Total
Hong Kong	52	58	110
China	10	5	15
Vietnam	6	6	12
Malaysia	0	8	8
China-Taiwan	5	1	6
Indonesia	4	1	5
Pakistan	4	1	5
Thailand	3	1	4
South Korea	0	3	3
<u>India</u>	2	0	2
Other countries receiving only one container: South Africa, Singapore, Saudi Arabia, Peru, Japan, Honduras, Egypt, Côte d'Ivoire, Belgium			9
			179

Some Conclusions From Tracking Exercise

- Some jurisdictions fail to respond, others are very responsive (HK).**
- No evidence that shipments are diminishing, some evidence that CRT rules are increasingly being followed (loopholes exploited)**
- 96% going to Asia**
- 70% going to China (including HK)**
- 61% going to Hong Kong**



**“50 to 100 Containers of e-Waste
per day Arriving in Hong Kong-
China”**

www.ponl.com

PONU 180112
15R1

MAX. GROSS	34,000 kg
	74,960 lb
TARE	4,850 kg
	10,690 lb
PAYLOAD	29,150 kg
	64,270 lb
CUBE	67.8 cu/m
	2.393 cu/ft

海 CUSTOMS 關

UAC 81879
4211

السعودية
السعودية
السعودية
السعودية





AM 5529 & AM 8530
於二零零七年六月一日起
開辦及維修由機電署負責
機電署負責人: 林先生 3155 4212 或 麥先生 3155 4209
24 小時維修熱線: 2471 9616



1. Name
2. Title
3. Phone
4. E-mail
5. Fax
6. Address



越發
汽車服務公司

劉強
234 87

劉強

22

04954273364

40



e-Waste Junk Yards -- New Territories, HK



00LU 352551 4
22G1

MGW.
TARE. 24.000 KGS
52.910 LBS
2.200 KGS
4.850 LBS

NET.
CU. CAP. 21.800 KGS
48.060 LBS
33.2 CU.M
1.170 CU.FT

LONG 長車







**Computer Monitors from USA,
Illegal to Import to HK or China**



Smuggled by Truck into Mainland



Guiyu, China



Recommendations



Legal Recommendations

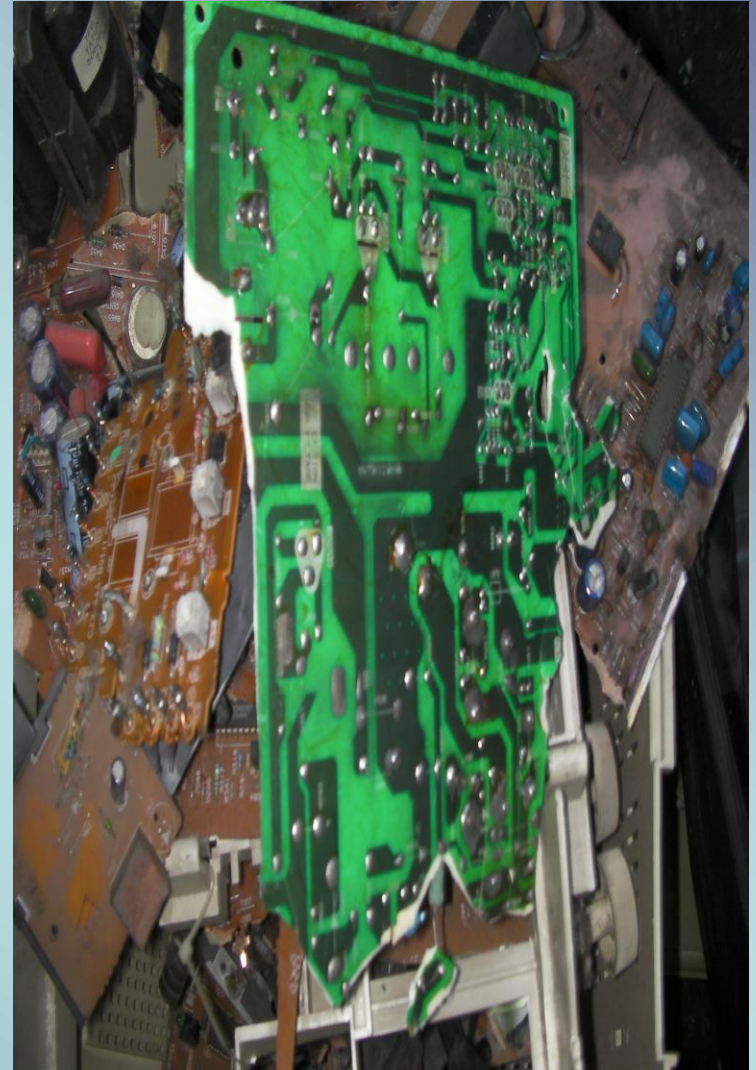
- a. **USA and Other Developed countries** must ratify and implement both Basel Convention and Basel Ban Amendment (Decision III/1).



Legal Recommendations

- b. **USA** must ban export of hazardous electronic waste to developing countries, including for reuse.

- c. **Developing countries** must implement the Basel Convention with National legislation.



Legal Recommendations



- e. All countries must create rules nationally that non-functioning and “near end-of-life” electronic equipment is hazardous waste.

Enforcement Recommendations

- a. **All countries** must prosecute illegal traffic as a criminal act and impose far stiffer penalties, including prison sentences.
- b. **All countries and agencies** should work more closely with NGOs, public, journalists, stakeholders.
- c. **Shipping Companies** to be approached to cooperate with enforcers (e.g. examining bills of lading, keeping a watch list of suspected smugglers, etc.)

Enforcement Recommendations

- d. **All countries to organize trainings for customs and police on the Basel Convention and especially on electronic waste.** Trainings to bring customs, police and environment officials together.

- e. **All countries to organize port inspection programs, globally and regionally, to educate stakeholders and prosecute violators.**

basel
action
network

**turn back
the toxic tide**



www.ban.org